

St. Clare

VMCH / WOODS BAGOT / OCULUS

OCTOBER 2024

living
edge®

Living Edge Company Overview



Living Edge is a leading provider of high quality residential and commercial furniture to the Australian market.

For more than 20 years, we have provided architects, designers and end clients the ideas, inspiration and solutions that enable them to create authentic, inviting and highly functional living and working spaces.

We pride ourselves in our ongoing relationship and excellent servicing of existing customers.



Living Edge is a Certified B Corporation™.

Living Edge became a *Certified B Corp* in May 2023.

An important moment in our company's history; it marked the culmination of 15 years of work and impact through our LivingOn sustainability program, and the start of a new journey as a member of global movement.

We're seeking to evolve our economic system to positively impact all stakeholders – our team members, communities, customers, and our planet.

Achieving *B Corp Certification* provides a valuable validation that we are on the right path to building a truly sustainable and socially responsible business.

Certified



Corporation

Furniture For Life



We represent brands whose products will last a lifetime and that can be *repaired and reconditioned* for use by new owners in the future.

- Prioritises long-term value over short-term cost.
- We believe that *longevity* is one of the purest forms of *sustainability*.



Furniture For Life / Quality & Durability



- High quality materials and durable construction are key to enabling a lifetime of use.

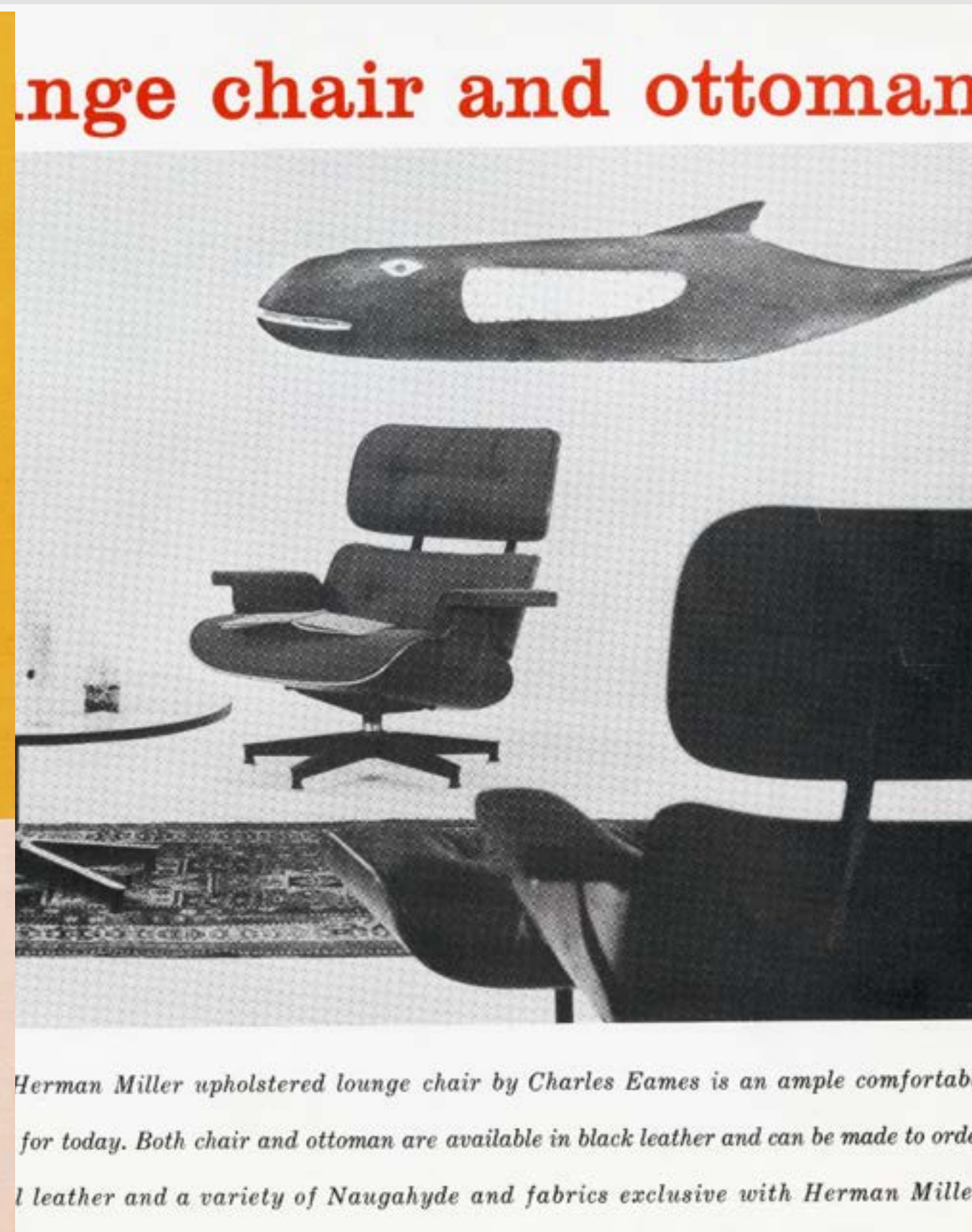
- These ensure that we can refurbish and repurpose products for a new life.



Furniture For Life / Timelessness



- Timeless design has the longevity to remain relevant and desirable.
- We believe in the value of future classics, as well as established icons.



Consultation

- Either 'On site' or 'In House'
- What is to be achieved?
- Inspiration and Needs

Design Process

- Room Layouts, Scale and Function
- Materiality and Mood Boarding
- Product Selection
- Access to VIP Discounting

Project Fulfillment

- Delivery Timelines
- ETA Updates
- White Glove Delivery
- Aftercare for purchases

Case Study // Rob Mills - Hampden Apartments



Criteria:

- Appointed Living Edge with some of the residences for a Furniture and Lighting Spec
- Direction similar to St Clare - Look and Feel very on point architecturally
- Clients wanted furniture pieces that reflected the ambience of the environment and architecture
- Design needed to feel integral to completeness of the home, but also personable to the client

Case Study // Rob Mills - Hampden Apartments

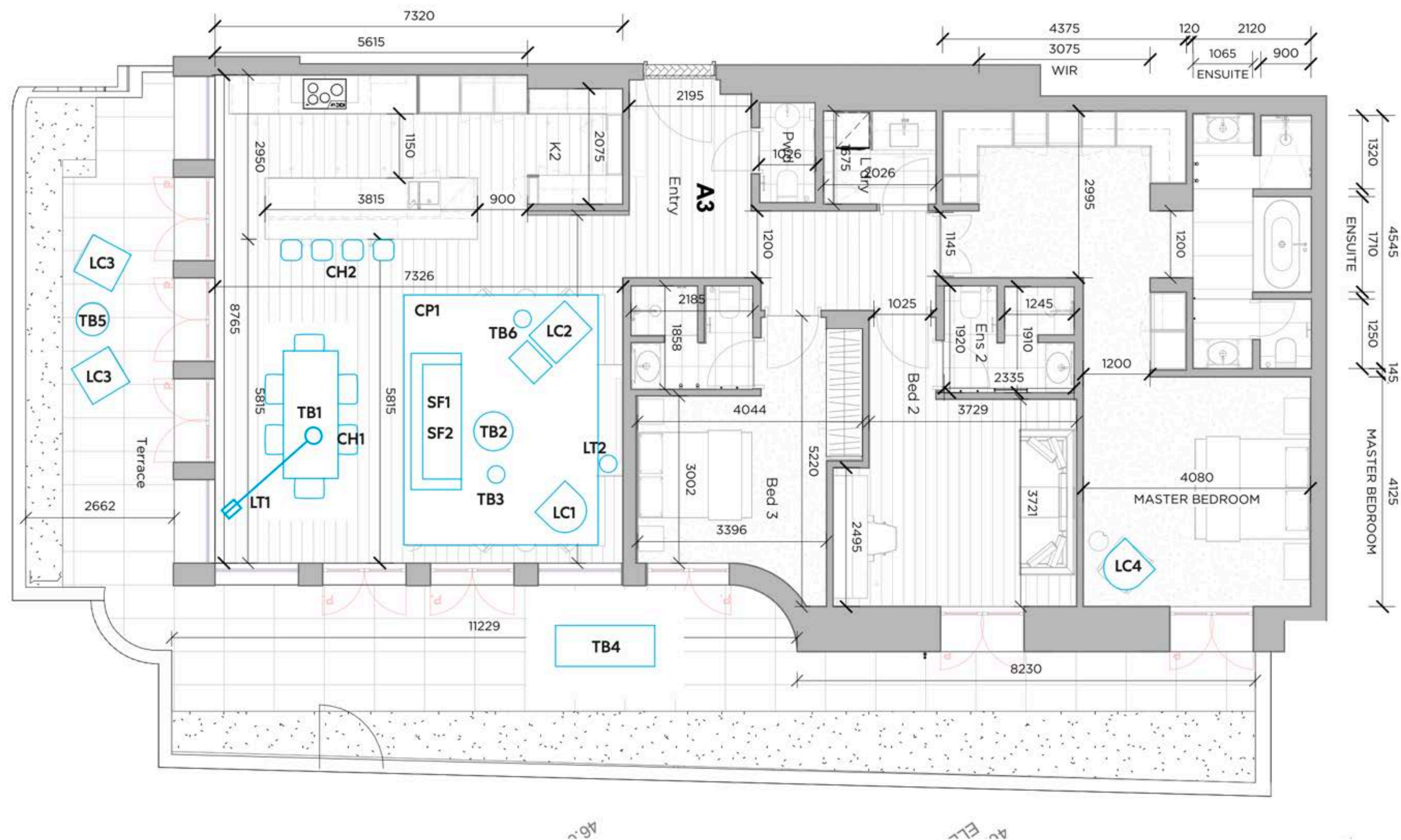


Presale Images sent to us



Tonal . Still . Inviting . Calm . Soft . Open . Harmonious . Tranquil

Case Study // Rob Mills - Hampden Apartments



Case Study // Rob Mills - Hampden Apartments



Vibe Tray

- Helps to set out the elements in one glimpse to keep a cohesive look
- Comparing Textures and colours
- How does the overall palette gel together?
- Are there any interesting contrasts?
- How can we stay away from too much beige but keep it tonal?
- How do we mix materiality to keep the look interesting?
- Are these home friendly?

Case Study // Rob Mills - Hampden Apartments

living
edge®



Case Study // Rob Mills - Hampden Apartments

living
edge®



Case Study // Rob Mills - Hampden Apartments

living
edge®



Case Study // Rob Mills - Hampden Apartments

living
edge®



CH2 - Stellar Works Utility Stool Oak



LT1- Flos Arco Floor Lamp



Case Study // Rob Mills - Hampden Apartments



SF2 - Walter Knoll Living Landscape 3 Seater



TB2&TB3 - Walter Knoll Stone Joco Tables Bianco Lasa/ Bronze legs



LC1 - Walter Knoll Andoo Armchair & Ottoman Oak



LC2 - Herman Miller Cross Hatch Chair & Ottoman Oak



LT2 - Flos Taccia Table Lamp



CP1 - Limited Edition Vintage New Beige Rug

Case Study // Rob Mills - Hampden Apartments

living
edge®



Case Study // Rob Mills - Hampden Apartments

living
edge®



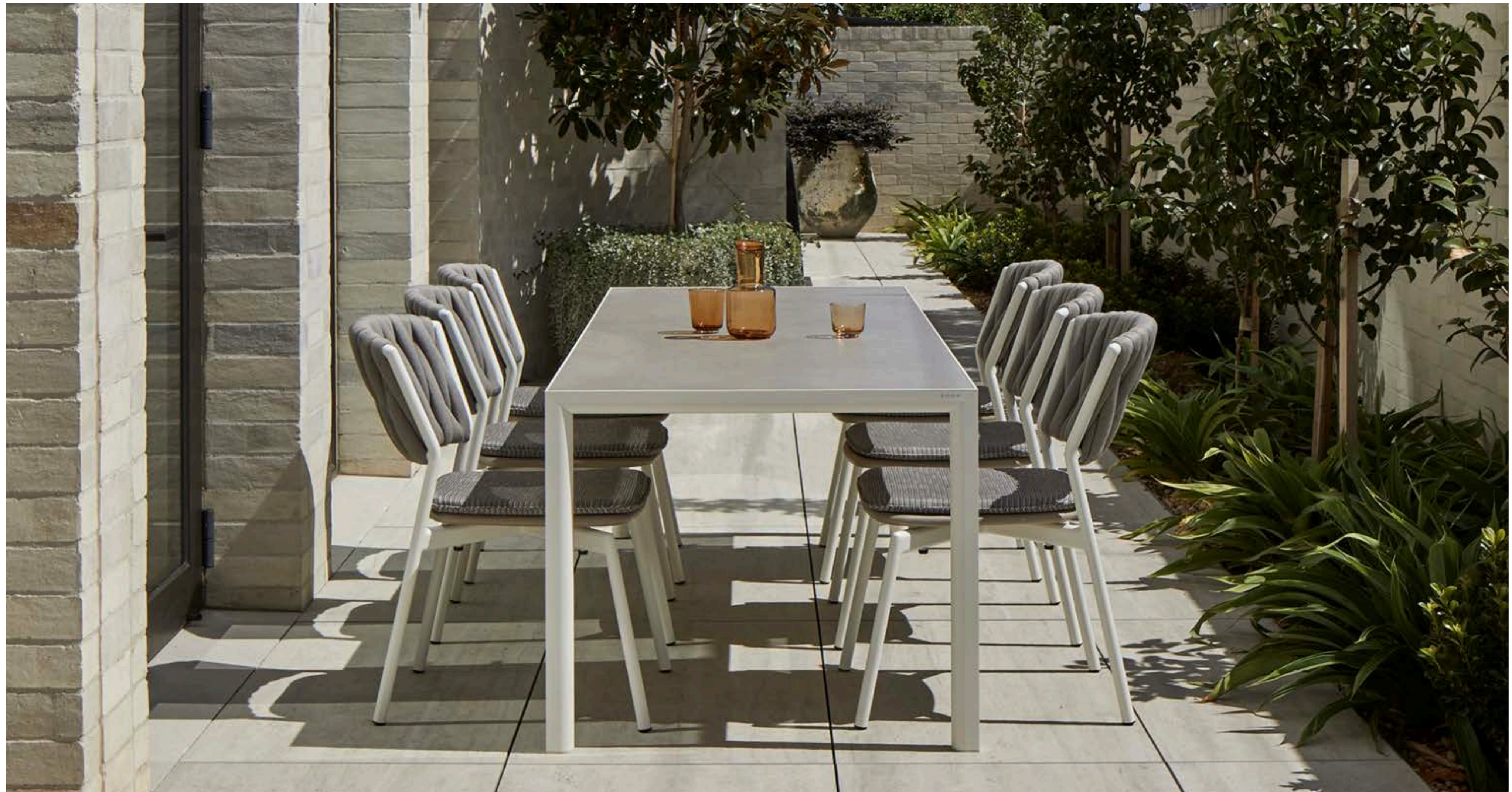
Case Study // Rob Mills - Hampden Apartments

living
edge®



Case Study // Rob Mills - Hampden Apartments

living
edge®



St. Clare by VMCH / Woods Bagot / Oculus

living
edge®



Warm . Still . Inviting . Calm . Soft . Open . Harmonious . Tranquil



St. Clare // Experiment

living
edge®

2BR + Study





St. Clare // Experiment #1 - White Gum

living
edge®

2BR + Study



St. Clare // Experiment

living
edge®

2BR + Study



Mariposa Corner Sofa
by VITRA Switzerland



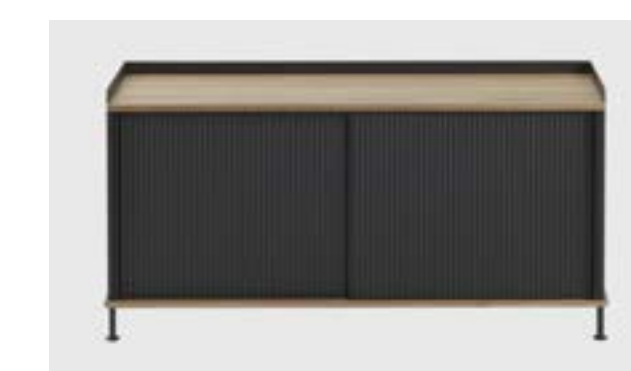
Oki Round Table
by Walter Knoll Germany



Akari 14A Floor Lamp
by VITRA Switzerland



Enfold Long Sideboard
by Muuto Denmark



St. Clare // Experiment

living
edge®

2BR + Study



Eames Whale
by Vitra Switzerland



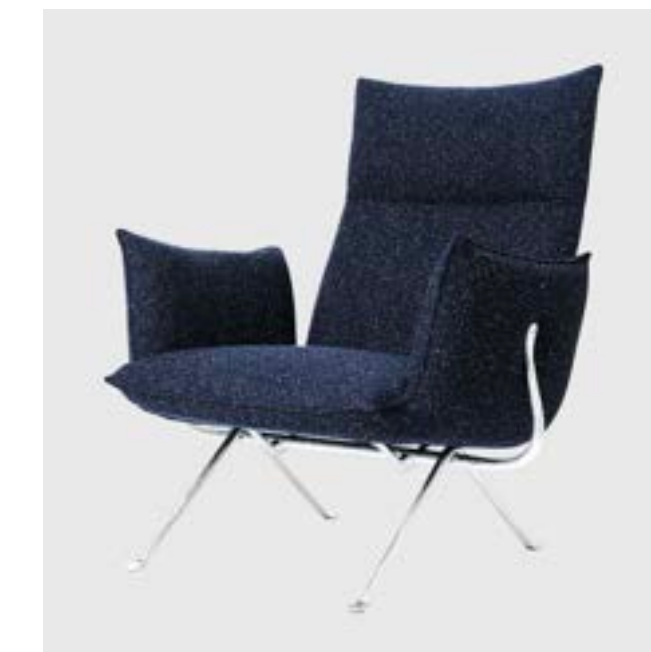
Ishino Wood Coffee Table
by Walter Knoll Germany



Relevo Rug
by Muuto Denmark



Officina High Armchair
by Magis Italy



Backenzahn Table
by E15 Germany



St. Clare // Experiment

living
edge®

2BR + Study



Midst Table 1600(Ø)mm
by Muuto Denmark



Sheru Side Chair
by Walter Knoll Germany



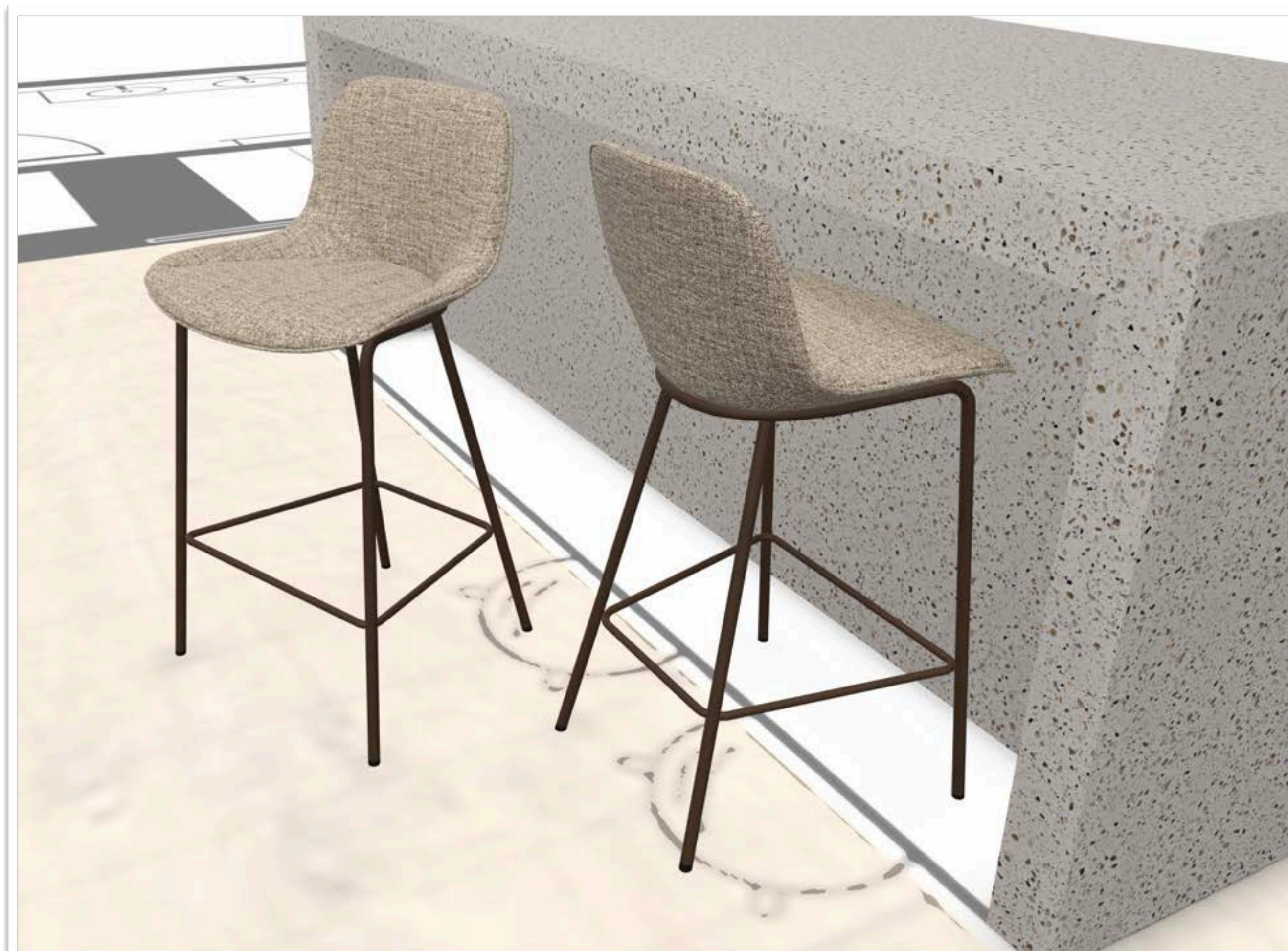
Sheru Armchair
by Walter Knoll Germany



St. Clare // Experiment

living
edge®

2BR + Study



Sheru Stool - Tube Base
by Walter Knoll Germany



Sheru Stool - Wood Base
by Walter Knoll Germany



St. Clare // Experiment

living
edge®

2BR + Study

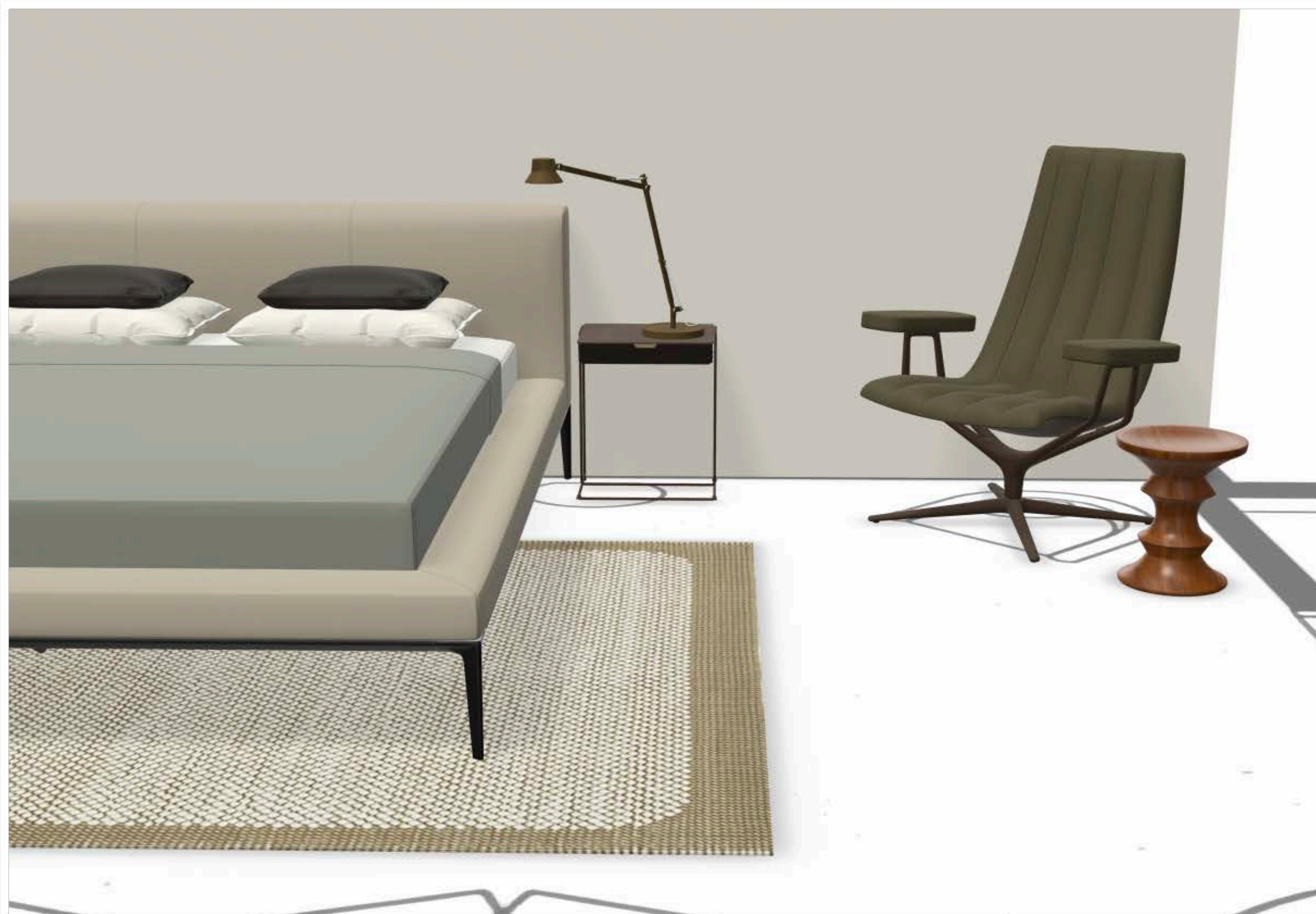
Jaan Queen Ben
by Walter Knoll Germany



St. Clare // Experiment

living
edge®

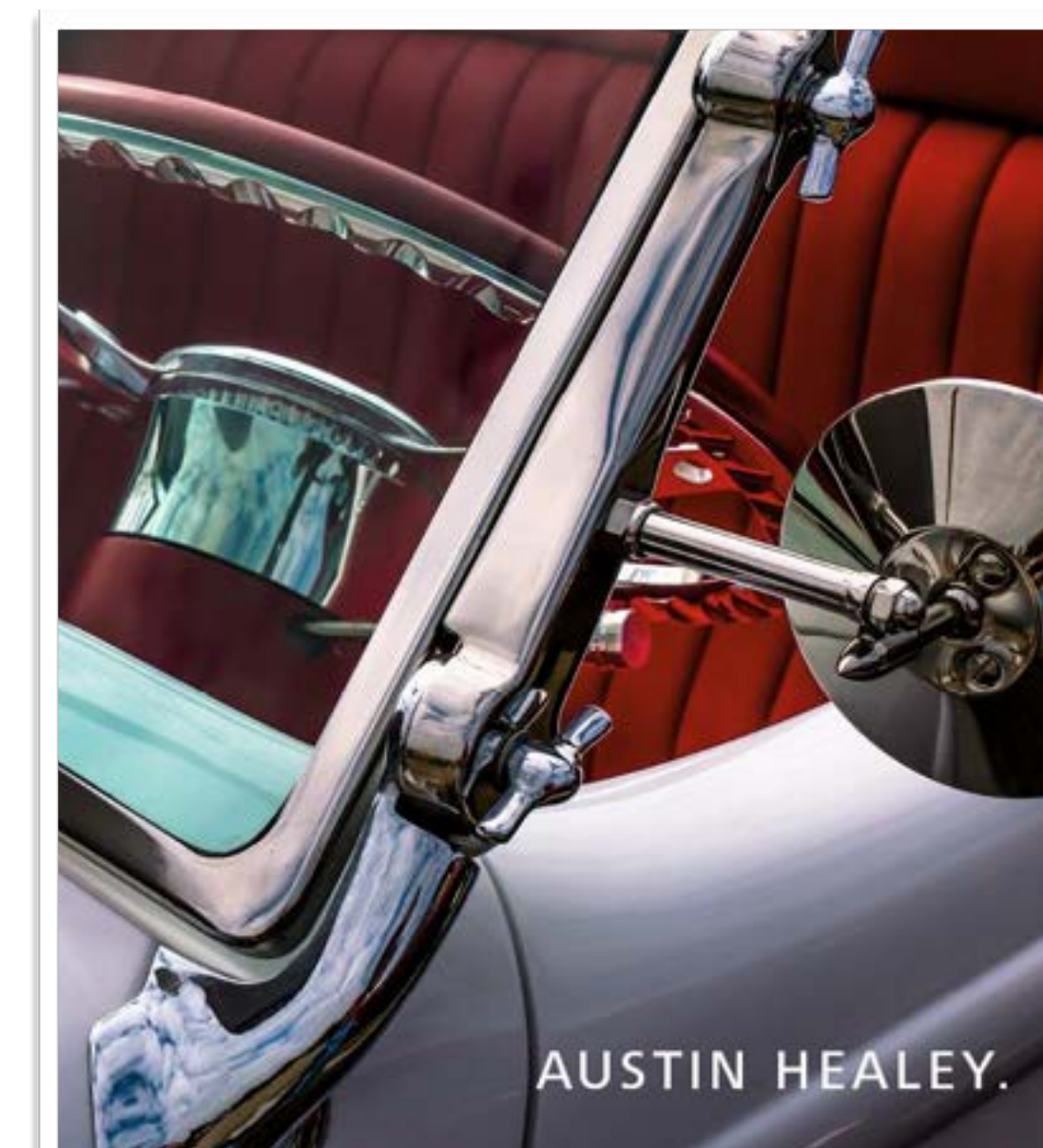
2BR + Study



Healey Chair
by Walter Knoll Germany



Eames Stool
by Herman Miller USA



St. Clare // Experiment

living
edge®

2BR + Study



Pebble Rug
by Muuto Denmark



Dedicate Table Lamp
by Muuto Denmark



Oki Table w/ Leather Case
by Walter Knoll Germany



St. Clare // Experiment

living
edge®

2BR + Study



Eames Soft Pad Management Chair
by Herman Miller USA



St. Clare // Experiment

living
edge®

2BR + Study



South Armchair + Table
by Magis Italy

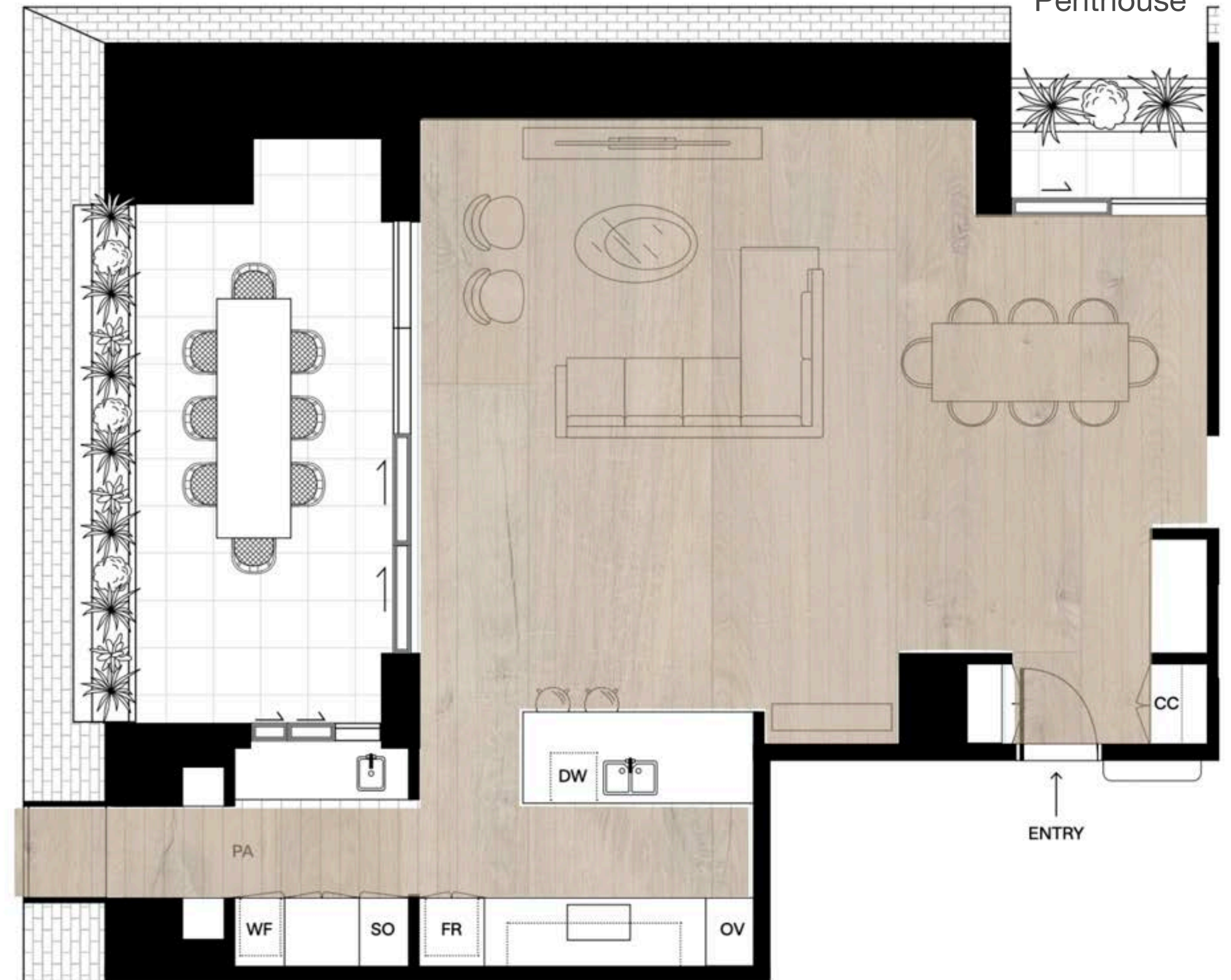




St. Clare // Experiment

living
edge®

Penthouse





St. Clare // Experiment

living
edge®

Penthouse



St. Clare // Experiment

living
edge®
Penthouse



St. Clare // Experiment

living
edge®

Penthouse



FK Bucket Chair (Low)
by Walter Knoll Germany



Oki Round Table (Brass)
by Walter Knoll Germany



*Occasional Chairs to Swivel around to the view

St. Clare // Experiment

living
edge®

Penthouse



Living Landscape Sofa
by Walter Knoll Germany



The Farns Sideboard (Low)
by Walter Knoll Germany



Tama Coffee Table
by Walter Knoll Germany



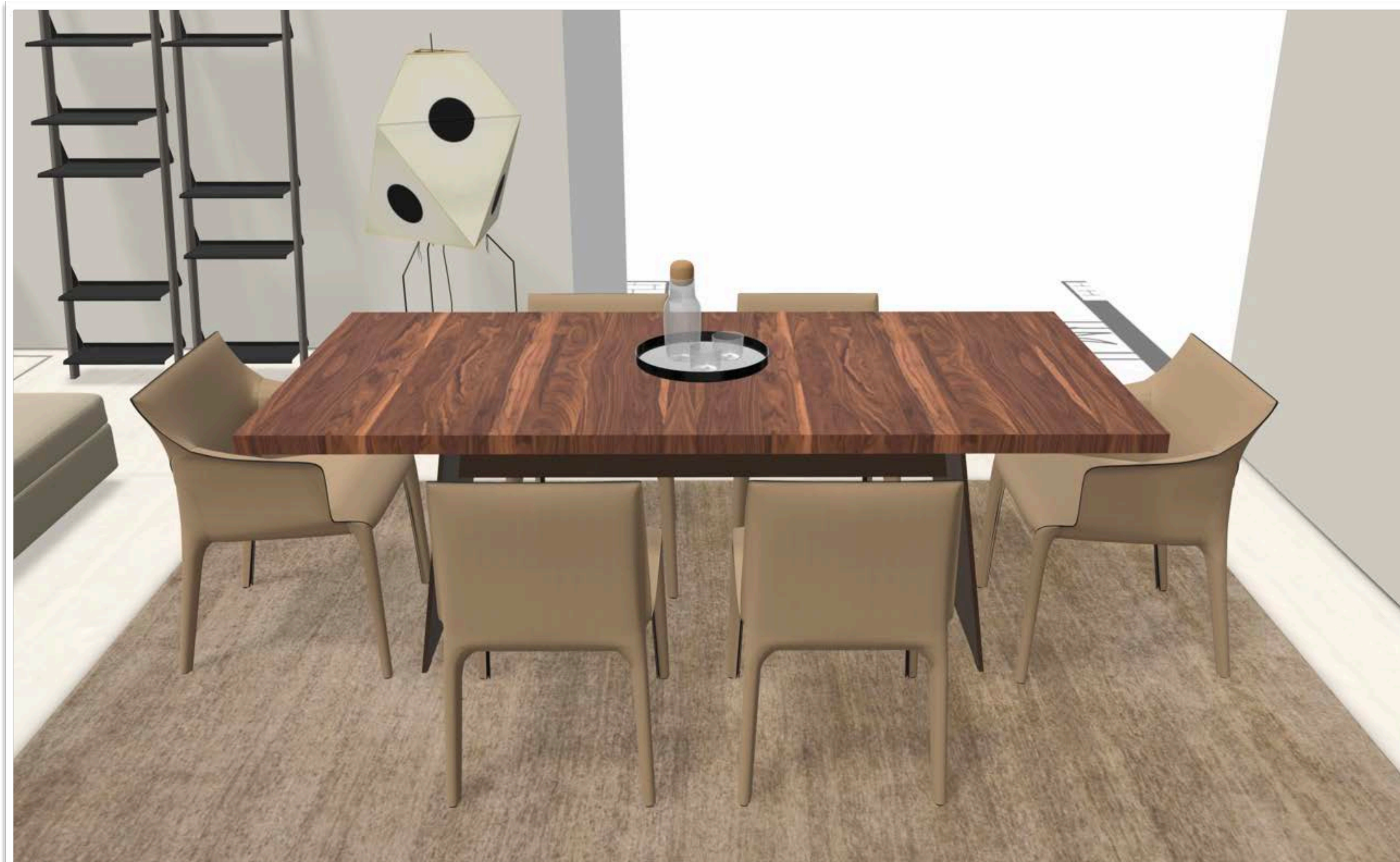
Mwamba Rug
by Walter Knoll Germany



St. Clare // Experiment

living
edge®

Penthouse



Tyke Shelving
By Magis Italy



Akari UF3-Q Floor Lamp
By VITRA Switzerland



St. Clare // Experiment

living
edge®

Penthouse



Tadeo Extendable Table
by Walter Knoll Germany



Saddle Side Chair
by Walter Knoll Germany



Saddle Armchair
by Walter Knoll Germany



St. Clare // Experiment

living
edge®
Penthouse



St. Clare // Experiment

living
edge®

Penthouse



Living Landscape - Corner Turntable Activated
Embraces Lounge room division to Dining Area

Tadeo Table - Extension Activated
Extended for up to 10 Seats

St. Clare // Experiment

living
edge®

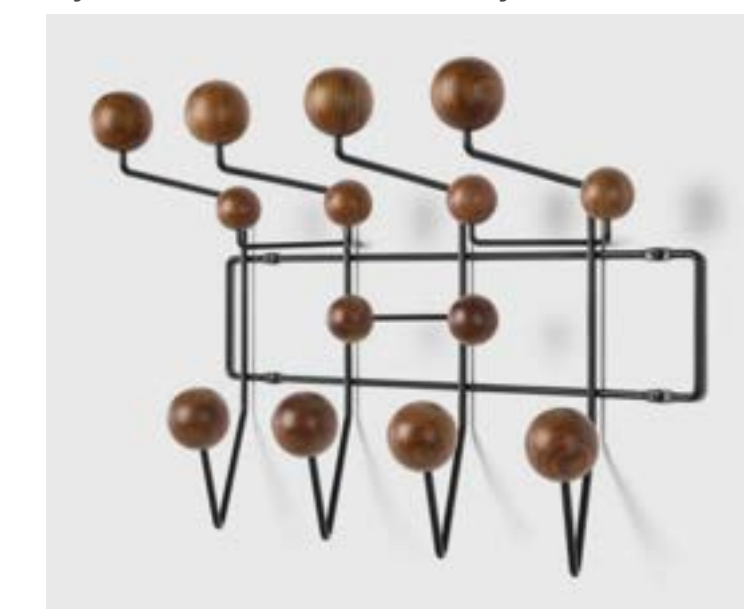
Penthouse



Saddle Bar Stool (Counter Height)
by Walter Knoll Germany



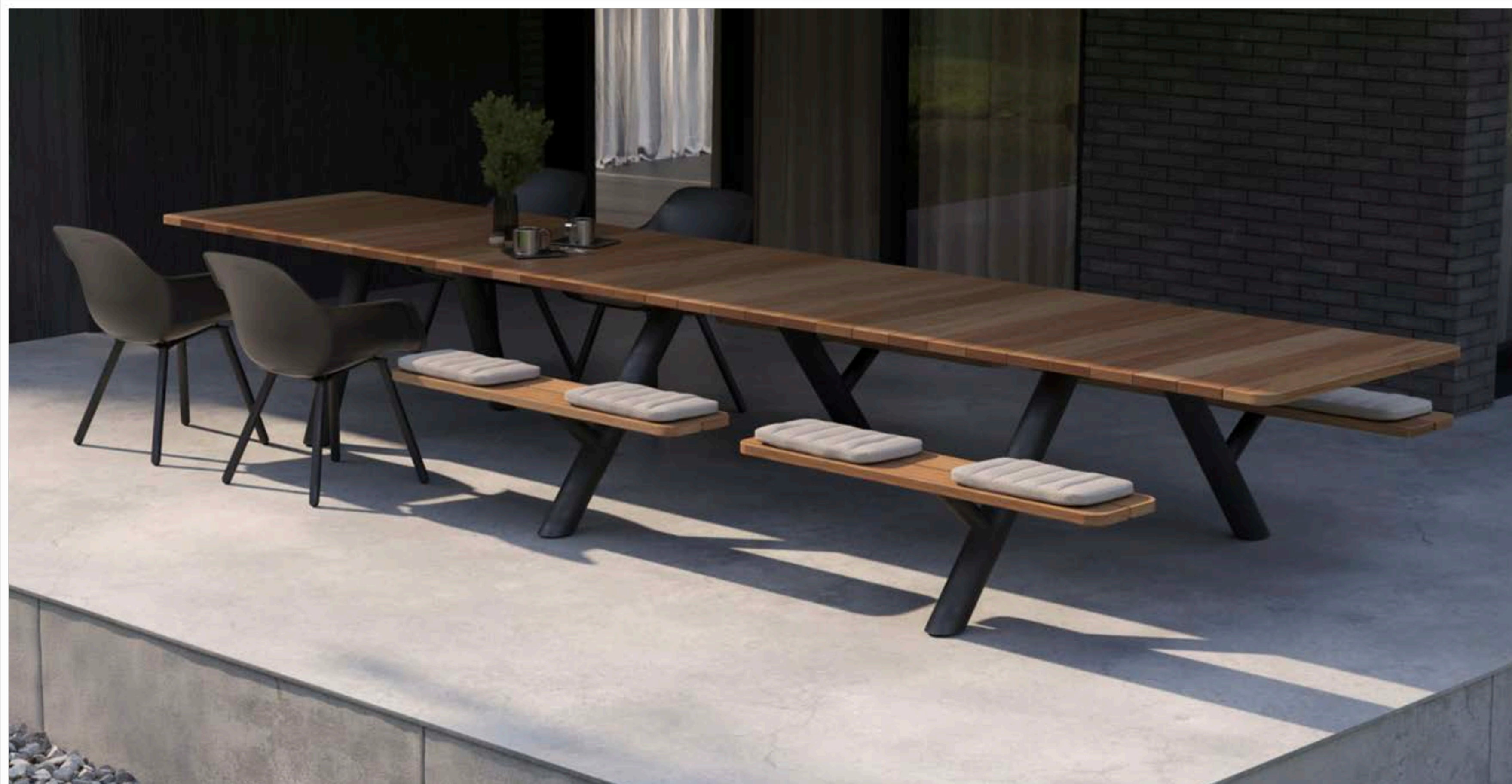
Eames 'Hang-It-All'
by Walter Knoll Germany



St. Clare // Experiment

living
edge®

Penthouse



Panigiri Table
By Extremis Belgium



St. Clare // Experiment

living
edge®
Penthouse



Thank you //

living
edge®

Bryan Mahony
Living Edge Director

&

Todd Brain
Residential Division

